

Framed by

INFINIUM



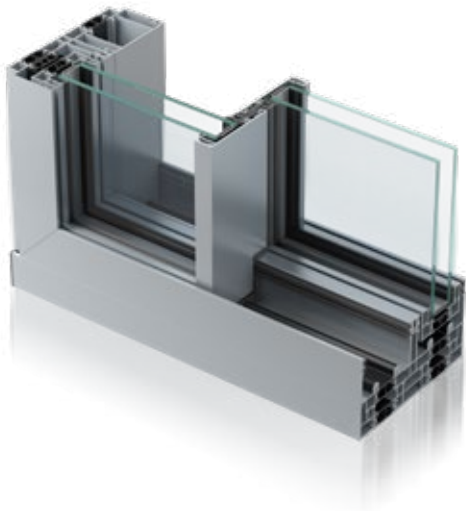
ALUK<sup>®</sup>

## TECHNICAL SPECIFICATIONS

Infinium brings together indoor and outdoor living spaces in exquisite harmony.

Free-flowing spaces are created thanks to stunningly slim sightlines that bathe every surface with natural light. Uninterrupted panoramic landscapes provide complete escapism, without need of escape.

While seamlessly integrated floor-to-ceiling glazing reflects the clarity of thought behind every inspired design decision.



### AluK (GB) Limited

Newhouse Farm Ind Est  
Chepstow  
NP16 6UD  
+44 (0)1291 639 739

### AluK Design Studio

5-11 Worship Street  
London EC2A 2BH

[aluk.co.uk](http://aluk.co.uk)

## SPECIFICATIONS

Performance and accreditation	
Uw-Value (Double Glazing)	1.3 W/m²K
Uw-Value (Triple Glazing)	< 1.0 W/m²K
Air Tightness	Class 4 (600 Pa)
Water Tightness	Class 8A (450 Pa)
Wind Load	Class C3 (1200 Pa, up to 160 km/h)
Size limits	
Max Sash Weight	400kg
Max Sash Dimension	3000mm (w)   3500mm (h)
System features	
Dual colour option	✓
Multi-point locking	✓
Glazing options	38mm - 52mm

## DESIGN FEATURES

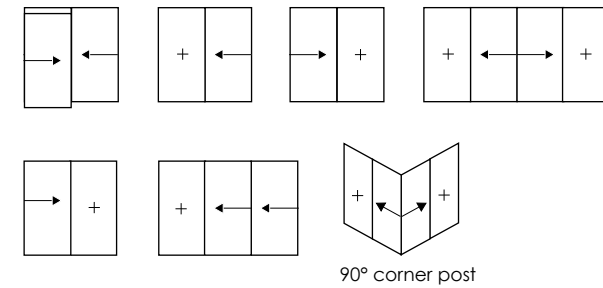
- Sliding door
- Fully concealed outer-frame
- 21mm central interlock
- One or more opening panels with large width dimensions up to 3000mm (W) and height dimensions up to 3500mm
- Holds up to 400 kg panel weight

## OPTIONS

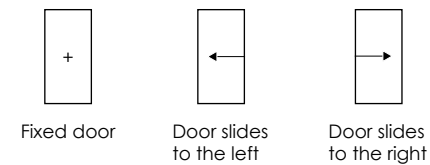
- Available in double or triple track
- Glazing options of 38mm – 52mm
- Floating corner post option for larger opening space
- Single colour available as standard
- Available in a range of configurations
- Double or triple glazing solutions available on the same outer-frame

## CONFIGURATIONS

The diagrams showed here illustrate some of the configurations achievable with AluK's Infinium system.



## KEY



## CAD CROSS SECTIONS

